

## SANCTVS

HO \_\_\_\_\_ LY, HO \_\_\_\_\_ LY, HO \_\_\_\_\_

\_\_\_\_\_ LY, \_\_\_\_\_ Lo \_\_\_\_\_ rd

God \_\_\_\_\_ of \_\_\_\_\_ Hosts: Hea ven \_\_\_\_\_ and

earth are fu \_\_\_\_\_ ll of thy glo \_\_\_\_\_ ry.

Glo ry \_\_\_\_\_ be to \_\_\_\_\_ thee, \_\_\_\_\_ O \_\_\_\_\_ Lo \_\_\_\_\_ rd

Mo st High. † Bles \_\_\_\_\_ sed is \_\_\_\_\_ he that \_\_\_\_\_

com \_\_\_\_\_ eth in the Name \_\_\_\_\_ of \_\_\_\_\_ the Lord.

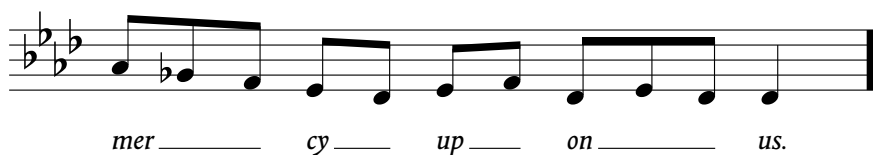
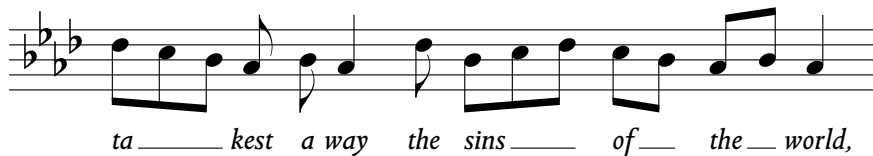
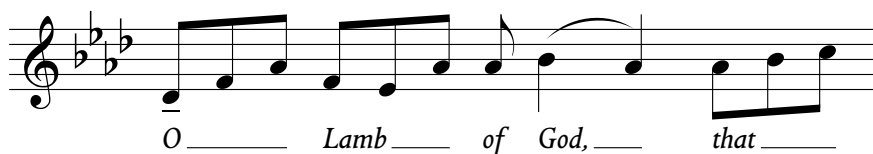
Ho \_\_\_\_\_ san \_\_\_\_\_ na


in the \_\_\_\_\_ High \_\_\_\_\_ est.

The image shows two staves of musical notation in a single system. The first staff begins with a treble clef and a key signature of three flats (B-flat, E-flat, A-flat). The melody consists of a series of eighth and quarter notes, with a long horizontal line underneath the notes indicating a sustained vowel sound. The lyrics 'Ho' and 'san' are placed under the first and second groups of notes, respectively, with a long line connecting them. The second staff continues the melody with similar note values and a long horizontal line. The lyrics 'in the' and 'High' are placed under the first and second groups of notes, respectively, with a long line connecting them. The word 'est.' is placed at the end of the staff. The system concludes with a double bar line.




# AGNUS DEI





ta ———— kest a way the sins ———— of — the — world,



grant ———— us ———— thy ———— peace.



*The woodcuts and typographic ornaments in this brochure are all by the English type designer, stonecutter, and wood engraver Eric Gill (1882–1940), an Anglican received into the Catholic Church. The woodcuts are Crown of Thorns (1923); Chalice with Host and Particles (1914); and Sacred Heart with Crown of Thorns (1923).*